

**GENERAL ARRANGEMENT
CYCLE PRIORITY LANES TIE-INS I
MILTON OF BUCHANAN
SCALE 1:1000@A1**



Notes:

Rev	Description	By	Date	Chk'd	Approved	Purpose of Issue
A	ORIGINAL ISSUE					

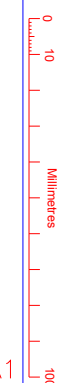
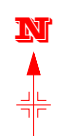
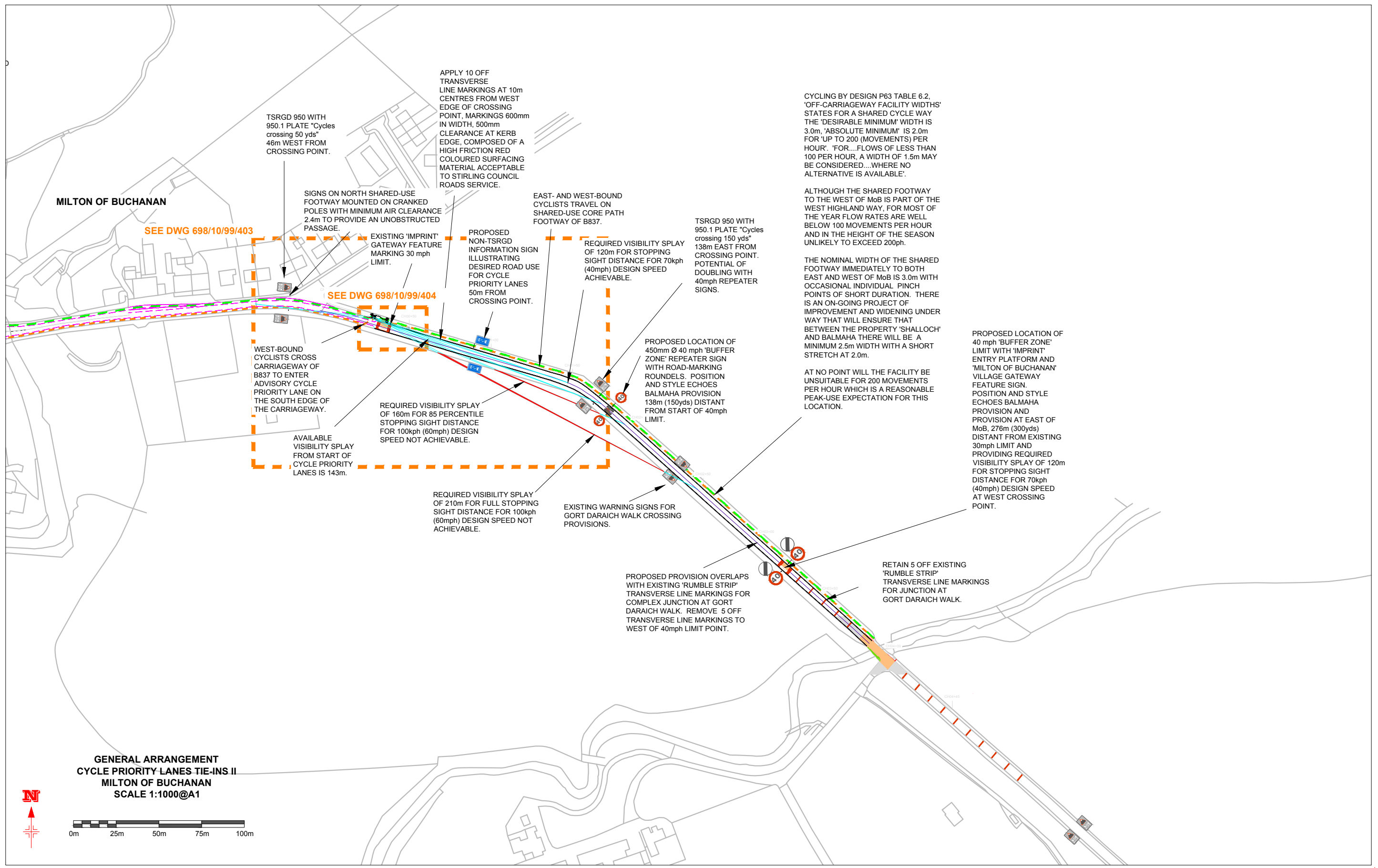
**DRYMEN
COMMUNITY
DEVELOPMENT
TRUST**
Transport Planning & Engineering
TP&E

Project	DRYMEN_COMMUNITY_DEVELOPMENT_TRUST DRYMEN-CROFTAMIE-BALAMAHA_ROUTES			
Title	MOB_PRIORITY_CYCLE_LANES_TIE-INS_I SHEET_1_OF_5			
Scale	1000@A1	Drawn	Checked	Approved
		CKM	ST	KD
		Date	Date	Date
		25/03/18	25/03/18	25/03/18
Drawing No.	698/10/99/400			Rev
				A

Reproduced by permission of Ordnance Survey® on behalf of HMSO. © Crown Copyright and database right 2014. All rights reserved. Ordnance Survey® Licence number 100031883. Unauthorised reproduction infringes Crown copyright and may lead to prosecution or civil proceedings.

A1

0
10
100
Millimetres



Notes:

Rev	Description	By	Date	Chk'd	Approved	Purpose of Issue
A	ORIGINAL ISSUE					

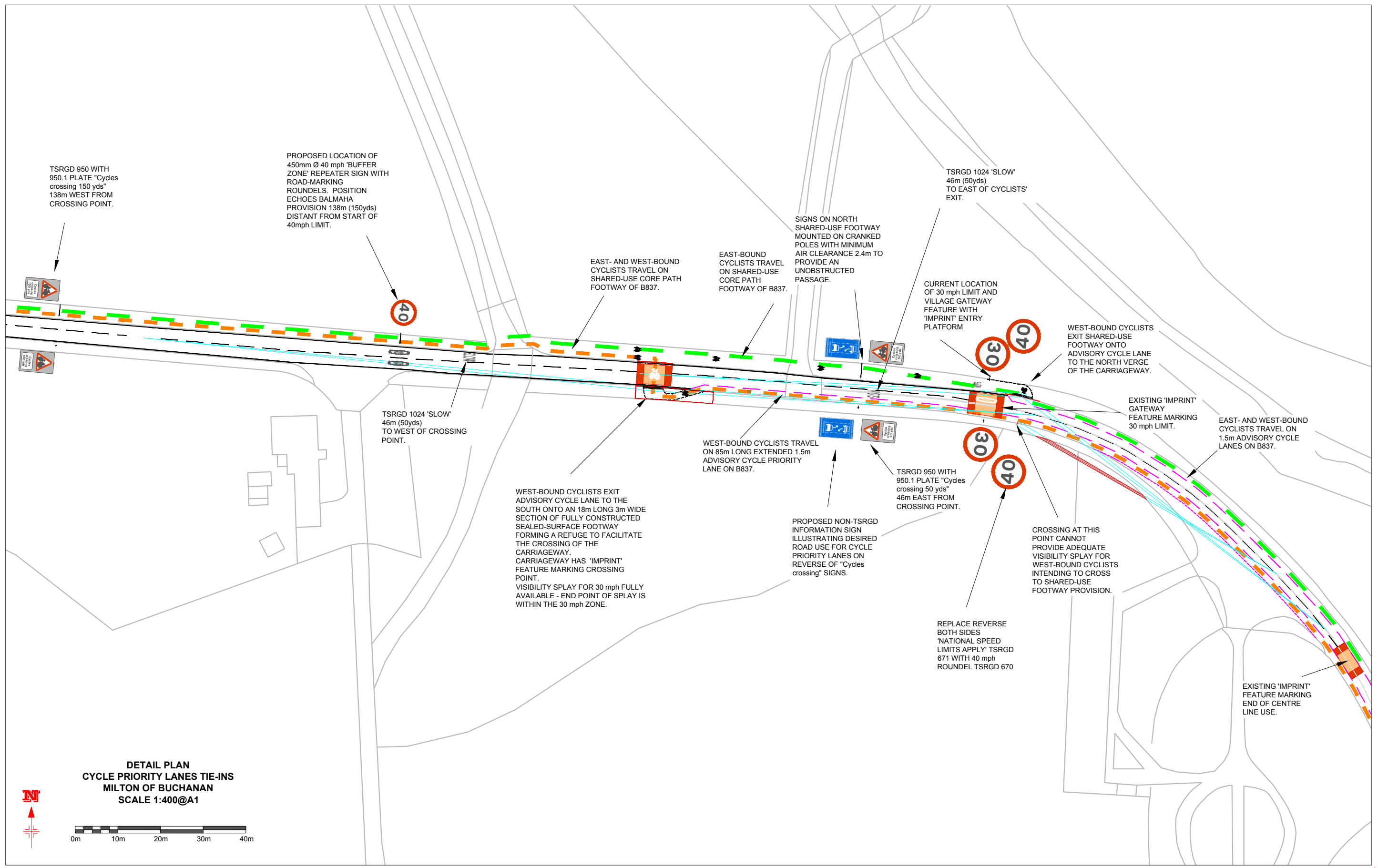
**DRYMEN
COMMUNITY
DEVELOPMENT
TRUST**

Transport Planning & Engineering

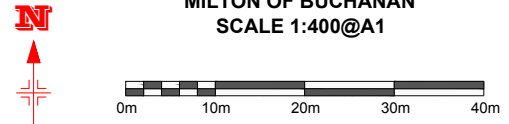
TP&E

Project	DRYMEN_COMMUNITY_DEVELOPMENT_TRUST DRYMEN-CROFTAMIE-BALMAHA_ROUTES		
Title	MOB_PRIORITY_CYCLE_LANES_TIE-INS_II SHEET_2_OF_6		
Scale	1000@A1	Drawn	CKM
Checked	ST	Approved	KD
Date	25/03/18	Date	25/03/18
Drawing No.	698/10/99/405		
Rev	A		

Reproduced by permission of Ordnance Survey® on behalf of HMSO. © Crown Copyright and database right 2014. All rights reserved. Ordnance Survey® Licence number 100031883. Unauthorised reproduction infringes Crown copyright and may lead to prosecution or civil proceedings.



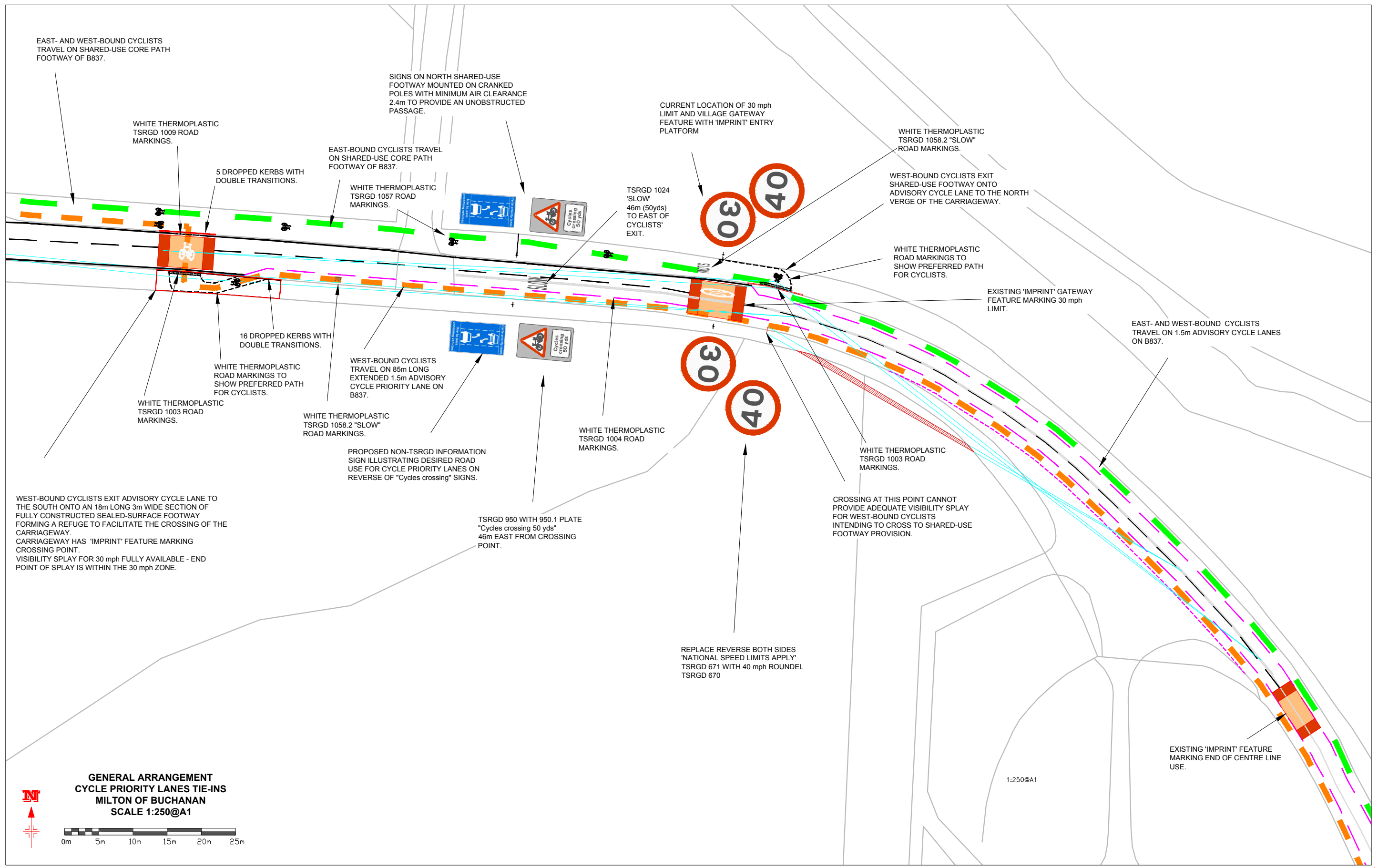
**DETAIL PLAN
CYCLE PRIORITY LANES TIE-INS
MILTON OF BUCHANAN
SCALE 1:400@A1**



0
10
100
Millimetres

Notes:						<p align="center">DRYMEN COMMUNITY DEVELOPMENT TRUST</p> <p align="center">Transport Planning & Engineering TP&E</p>	Project DRYMEN_COMMUNITY_DEVELOPMENT_TRUST DRYMEN-CROFTAMIE-BALAMAHA_ROUTES	
Rev							Title MOB_PRIORITY_CYCLE_LANES_TIE-INS_WEST_1:400 SHEET_2_OF_5	
Description							Scale 1:400@A1	
By							Drawing No. 698/10/99/401	
Date							Rev A	
Chk'd						Date		
Approved						Date		
Purpose of Issue						Date		
A						Date		
ORIGINAL ISSUE						Date		

Reproduced by permission of Ordnance Survey on behalf of HMSO. © Crown Copyright and database right 2014. All rights reserved. Ordnance Survey Licence number 100031883. Unauthorised reproduction infringes Crown copyright and may lead to prosecution or civil proceedings.



**GENERAL ARRANGEMENT
CYCLE PRIORITY LANES TIE-INS
MILTON OF BUCHANAN
SCALE 1:250@A1**

Notes:

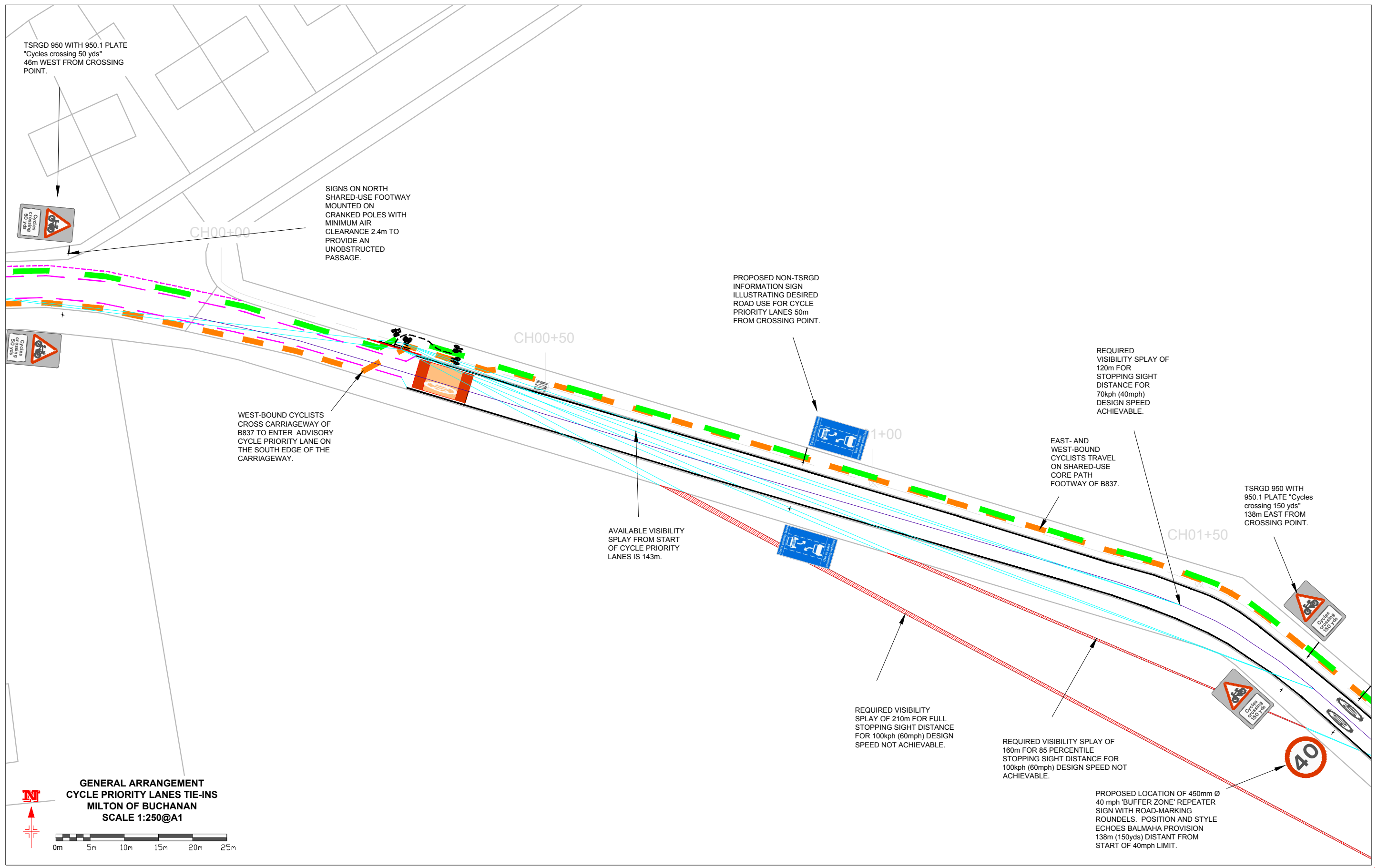
Rev	Description	By	Date	Chk'd	Approved	Purpose of Issue
A	ORIGINAL ISSUE					

Client

TP&E
Transport Planning & Engineering

Project	DRYMEN_COMMUNITY_DEVELOPMENT_TRUST DRYMEN-CROFTAMIE-BALAMAHA_ROUTES		
Title	MOB_PRIORITY_CYCLE_LANES_TIE-INS_WEST_1:250 SHEET_3_OF_5		
Scale	Drawn CKM Date 25/03/18	Checked ST Date 25/03/18	Approved KD Date 25/03/18
Drawing No.	698/10/99/402		Rev A

0 10 100
Millimetres



TSRGD 950 WITH 950.1 PLATE
"Cycles crossing 50 yds"
46m WEST FROM CROSSING POINT.

SIGNS ON NORTH SHARED-USE FOOTWAY MOUNTED ON CRANKED POLES WITH MINIMUM AIR CLEARANCE 2.4m TO PROVIDE AN UNOBSTRUCTED PASSAGE.

PROPOSED NON-TSRGD INFORMATION SIGN ILLUSTRATING DESIRED ROAD USE FOR CYCLE PRIORITY LANES 50m FROM CROSSING POINT.

REQUIRED VISIBILITY SPLAY OF 120m FOR STOPPING SIGHT DISTANCE FOR 70kph (40mph) DESIGN SPEED ACHIEVABLE.

WEST-BOUND CYCLISTS CROSS CARRIAGEWAY OF B837 TO ENTER ADVISORY CYCLE PRIORITY LANE ON THE SOUTH EDGE OF THE CARRIAGEWAY.

AVAILABLE VISIBILITY SPLAY FROM START OF CYCLE PRIORITY LANES IS 143m.

EAST- AND WEST-BOUND CYCLISTS TRAVEL ON SHARED-USE CORE PATH FOOTWAY OF B837.

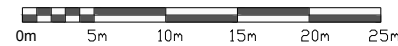
TSRGD 950 WITH 950.1 PLATE "Cycles crossing 150 yds" 138m EAST FROM CROSSING POINT.

REQUIRED VISIBILITY SPLAY OF 210m FOR FULL STOPPING SIGHT DISTANCE FOR 100kph (60mph) DESIGN SPEED NOT ACHIEVABLE.

REQUIRED VISIBILITY SPLAY OF 160m FOR 85 PERCENTILE STOPPING SIGHT DISTANCE FOR 100kph (60mph) DESIGN SPEED NOT ACHIEVABLE.

PROPOSED LOCATION OF 450mm Ø 40 mph 'BUFFER ZONE' REPEATER SIGN WITH ROAD-MARKING ROUNDLS. POSITION AND STYLE ECHOES BALMAHA PROVISION 138m (150yds) DISTANT FROM START OF 40mph LIMIT.

**GENERAL ARRANGEMENT
CYCLE PRIORITY LANES TIE-INS
MILTON OF BUCHANAN
SCALE 1:250@A1**



Notes:

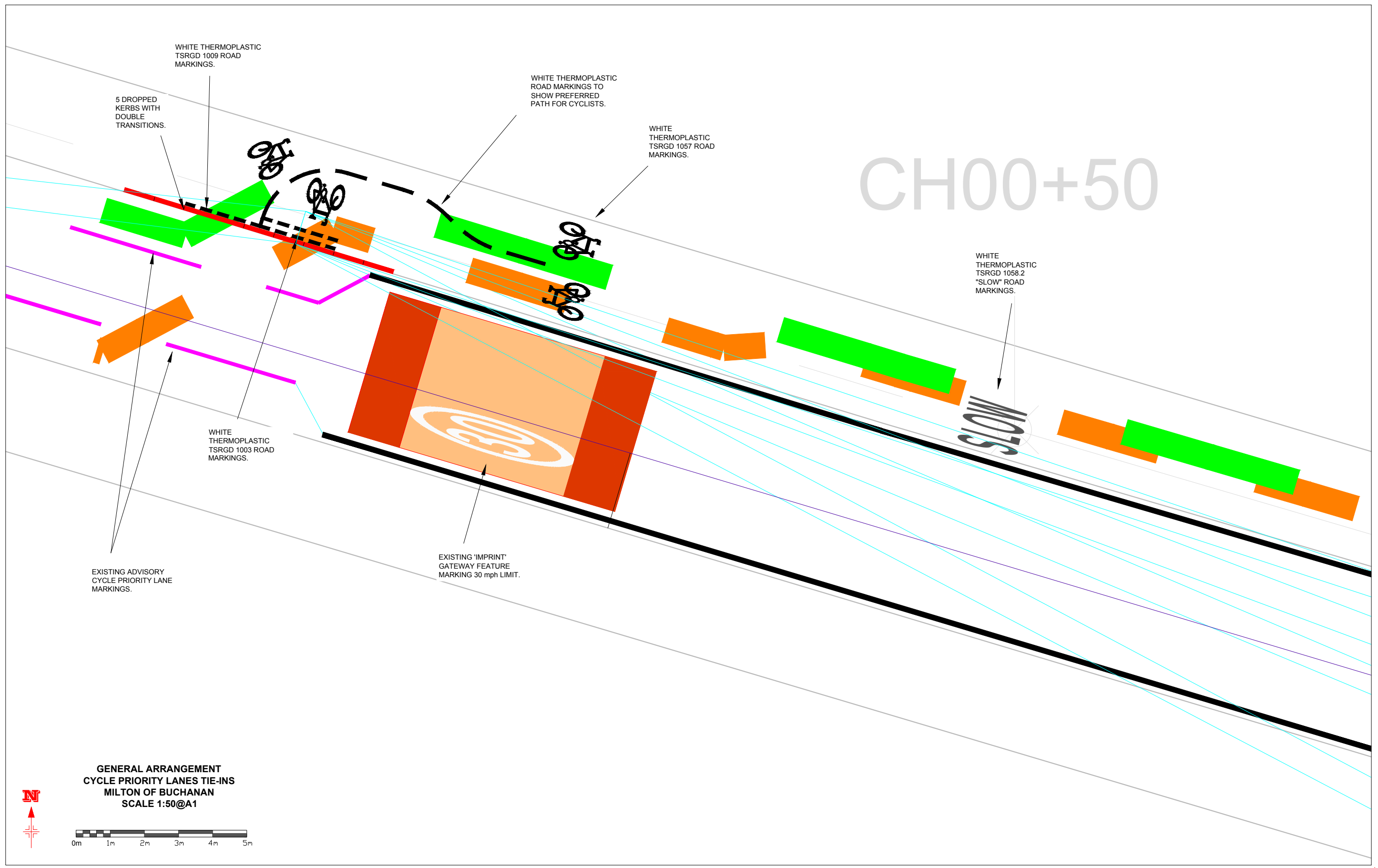
Rev	Description	By	Date	Chk'd	Approved	Purpose of Issue
A	ORIGINAL ISSUE					

**DRYMEN
COMMUNITY
DEVELOPMENT
TRUST**

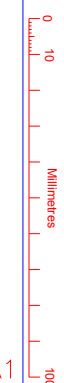
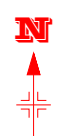
Transport Planning & Engineering
TP&E

Project	DRYMEN_COMMUNITY_DEVELOPMENT_TRUST DRYMEN-CROFTAMIE-BALMAHA_ROUTES		
Title	MOB_PRIORITY_CYCLE_LANES_TIE-INS_EAST_1:250 SHEET_3_OF_5		
Scale	1:250@A1	Drawn	CKM
Checked	ST	Approved	KD
Date	25/03/18	Date	25/03/18
Date	25/03/18	Date	25/03/18
Drawing No.	698/10/99/403		
Rev	A		

Reproduced by permission of Ordnance Survey® on behalf of HMSO. © Crown Copyright and database right 2014. All rights reserved. Ordnance Survey® Licence number 100031883. Unauthorised reproduction infringes Crown copyright and may lead to prosecution or civil proceedings.



**GENERAL ARRANGEMENT
CYCLE PRIORITY LANES TIE-INS
MILTON OF BUCHANAN
SCALE 1:50@A1**



Notes:

Rev	Description	By	Date	Chk'd	Approved	Purpose of Issue
A	ORIGINAL ISSUE					

**DRYMEN
COMMUNITY
DEVELOPMENT
TRUST**

Transport Planning & Engineering

TP&E

Project	DRYMEN_COMMUNITY_DEVELOPMENT_TRUST DRYMEN-CROFTAMIE-BALAMAHA_ROUTES		
Title	MOB_PRIORITY_CYCLE_LANES_TIE-INS_EAST_1:50 SHEET_5_OF_5		
Scale	1:50@A1	Drawing No.	698/10/99/404
Drawn	CKM	Checked	ST
Date	25/03/18	Date	25/03/18
Approved	KD	Date	25/03/18
Rev	A		

Reproduced by permission of Ordnance Survey® on behalf of HMSO. © Crown Copyright and database right 2014. All rights reserved. Ordnance Survey® Licence number 100031883. Unauthorised reproduction infringes Crown copyright and may lead to prosecution or civil proceedings.