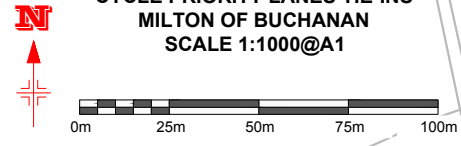


**GENERAL ARRANGEMENT
CYCLE PRIORITY LANES TIE-INS
MILTON OF BUCHANAN
SCALE 1:1000@A1**



Notes:

Reproduced by permission of Ordnance Survey on behalf of HMSO. © Crown Copyright and database right 2014. All rights reserved. Ordnance Survey Licence number 100031883. Unauthorised reproduction infringes Crown copyright and may lead to prosecution or civil proceedings.

Rev	Description	By	Date	Chk'd	Approved	Purpose of Issue
A	ORIGINAL ISSUE					

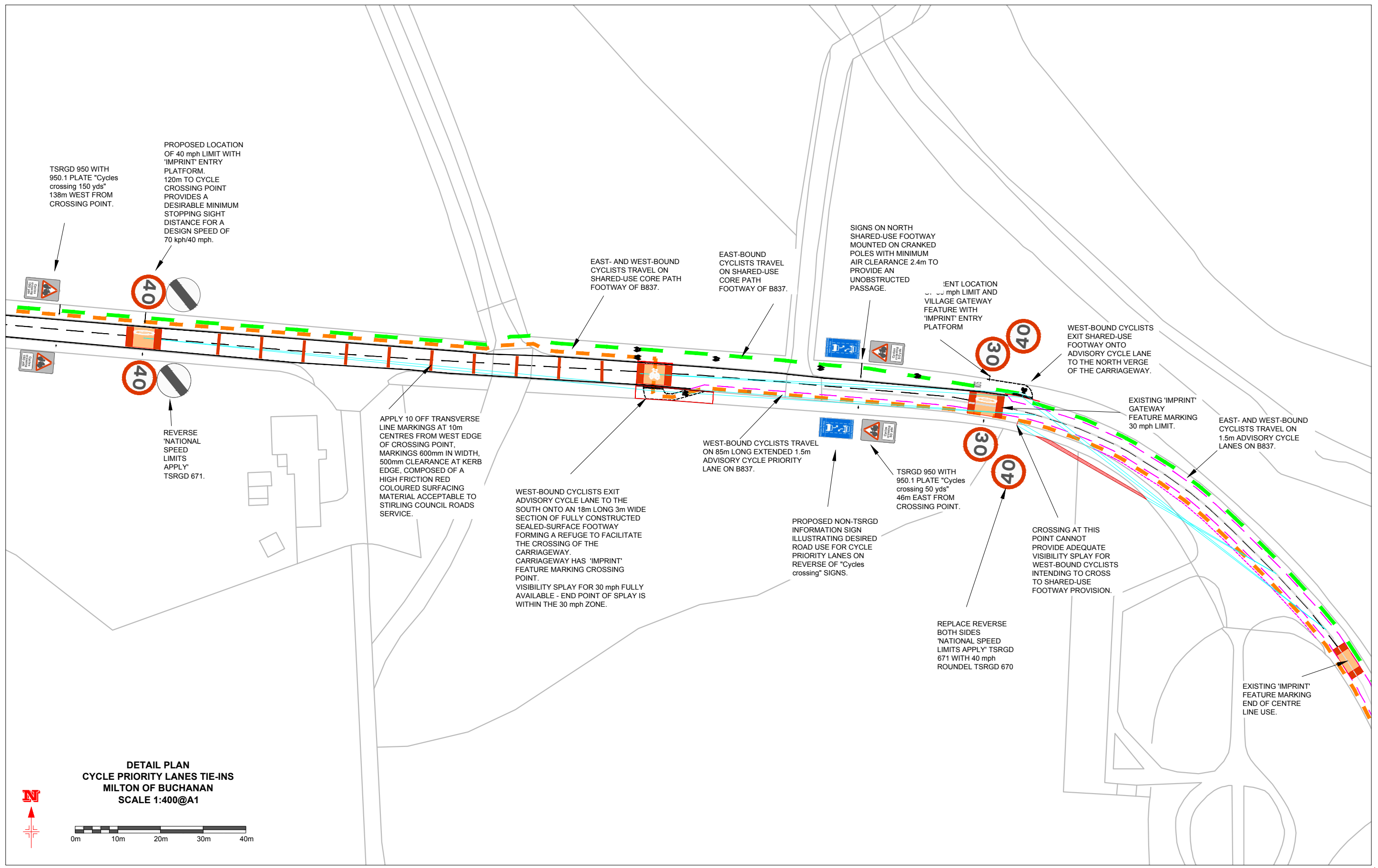
**DRYMEN
COMMUNITY
DEVELOPMENT
TRUST**

Transport Planning & Engineering
TP&E

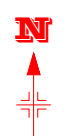
Project	DRYMEN_COMMUNITY_DEVELOPMENT_TRUST DRYMEN-CROFTAMIE-BALAMAHA_ROUTES		
Title	MOB_PRIORITY_CYCLE_LANES_TIE-INS SHEET_1_OF_5		
Scale	1000@A1	Drawn	CKM
Checked	ST	Approved	KD
Date	25/03/18	Date	25/03/18
Drawing No.	698/10/99/400		
Rev	A		

A1

0 10 100
Millimetres



**DETAIL PLAN
CYCLE PRIORITY LANES TIE-INS
MILTON OF BUCHANAN
SCALE 1:400@A1**



0 10 100
Millimetres

Notes:

Rev	Description	By	Date	Chk'd	Approved	Purpose of Issue
A	ORIGINAL ISSUE					

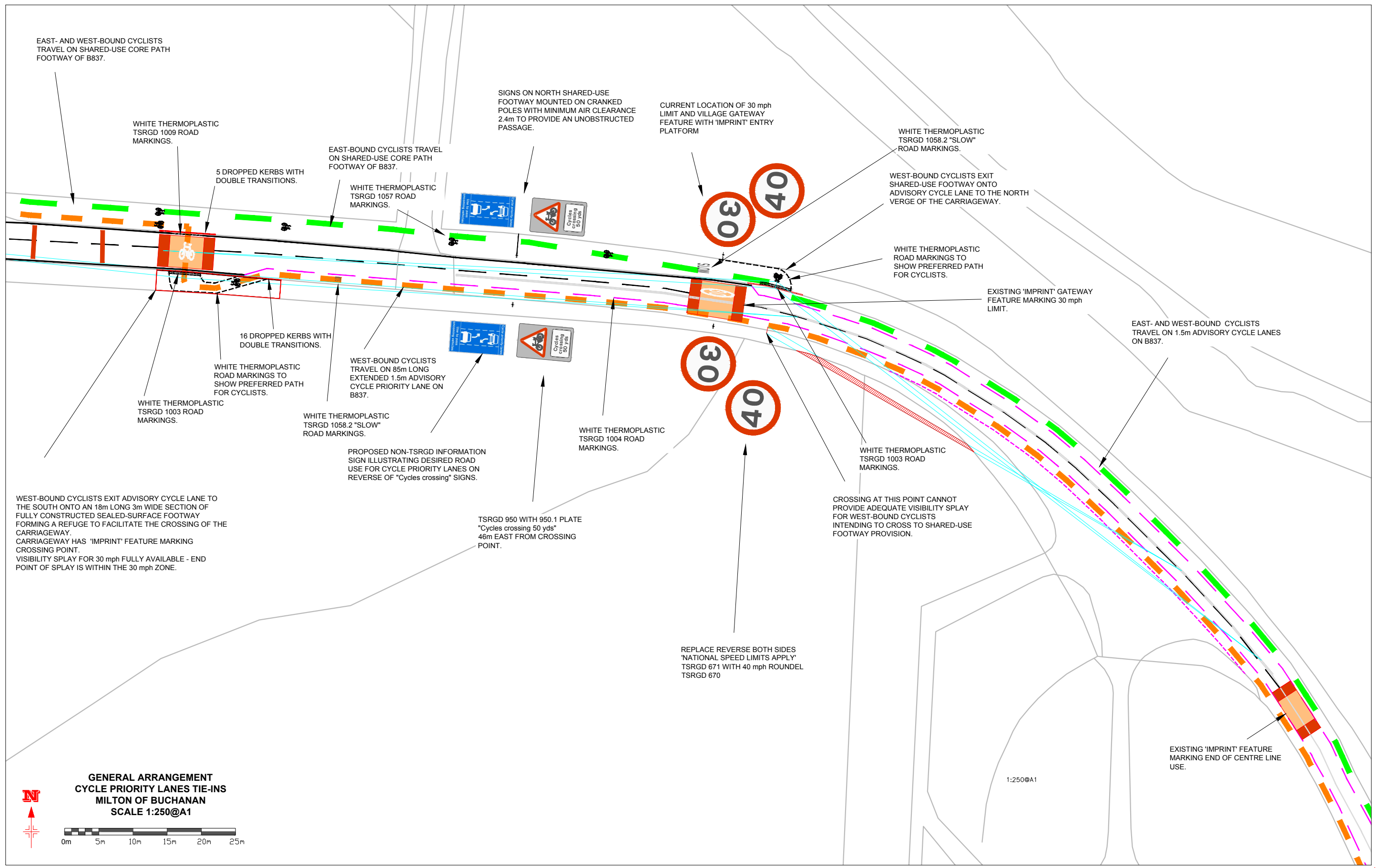
Rev	Description	By	Date	Chk'd	Approved	Purpose of Issue

**DRYMEN
COMMUNITY
DEVELOPMENT
TRUST**

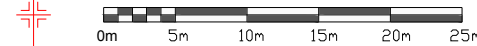
Transport Planning & Engineering
TP&E

Project	DRYMEN_COMMUNITY_DEVELOPMENT_TRUST DRYMEN-CROFTAMIE-BALAMAHA_ROUTES			
Title	MOB_PRIORITY_CYCLE_LANES_TIE-INS_WEST_1:400 SHEET_2_OF_5			
Scale	1:400@A1	Drawn	Checked	Approved
		CKM	ST	KD
		Date	Date	Date
		25/03/18	25/03/18	25/03/18
Drawing No.	698/10/99/401			Rev
				A

Reproduced by permission of Ordnance Survey on behalf of HMSO. © Crown Copyright and database right 2014. All rights reserved. Ordnance Survey Licence number 100031883. Unauthorised reproduction infringes Crown copyright and may lead to prosecution or civil proceedings.



**GENERAL ARRANGEMENT
CYCLE PRIORITY LANES TIE-INS
MILTON OF BUCHANAN
SCALE 1:250@A1**



0 10 100
Millimetres

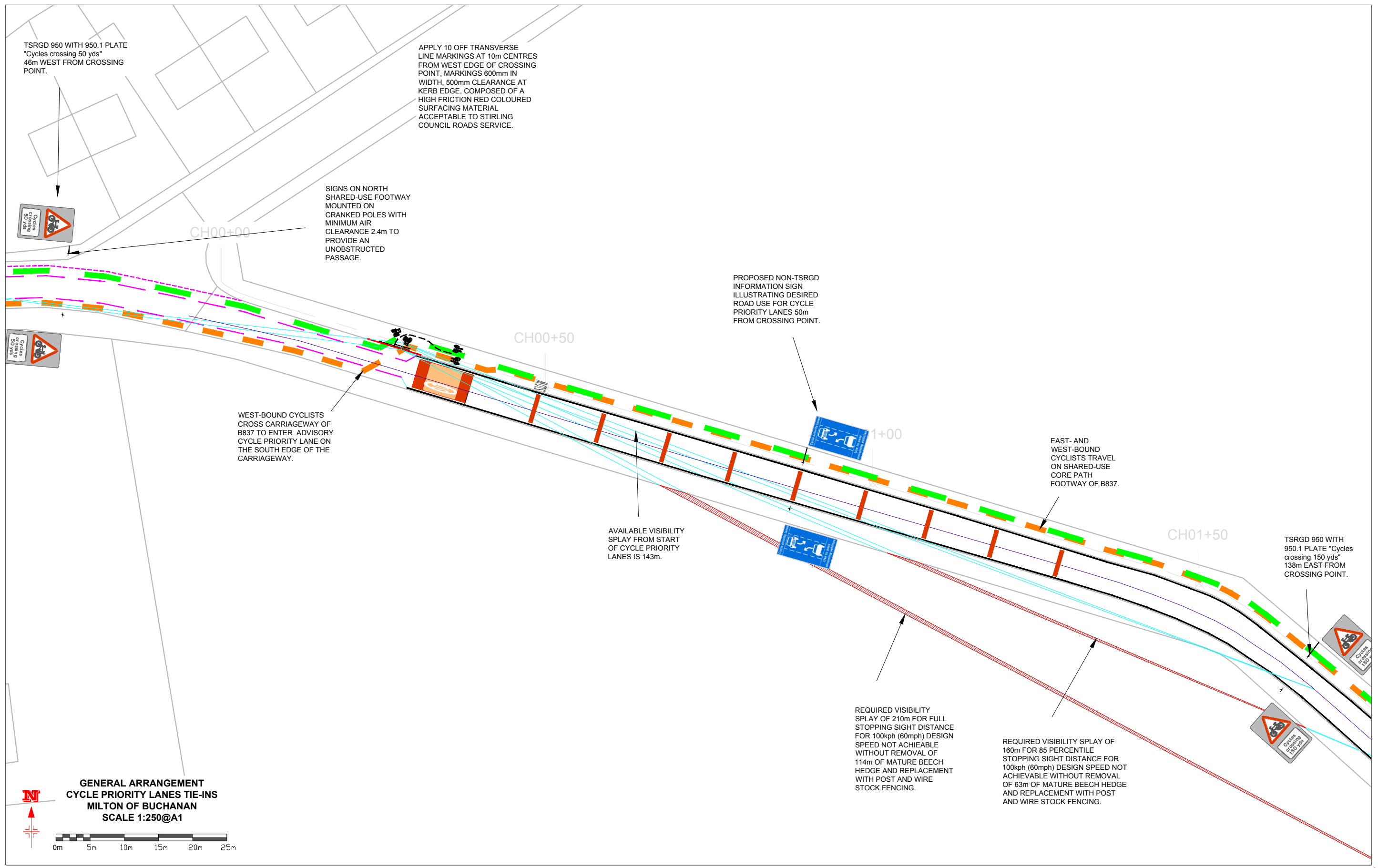
Notes:

Rev	Description	By	Date	Chk'd	Approved	Purpose of Issue
A	ORIGINAL ISSUE					

Client

TP&E
Transport Planning & Engineering

Project	DRYMEN_COMMUNITY_DEVELOPMENT_TRUST DRYMEN-CROFTAMIE-BALAMAHA_ROUTES		
Title	MOB_PRIORITY_CYCLE_LANES_TIE-INS_WEST_1:250 SHEET_3_OF_5		
Scale	Drawn CKM Date 25/03/18	Checked ST Date 25/03/18	Approved KD Date 25/03/18
Drawing No.	698/10/99/402		Rev A



TSRGD 950 WITH 950.1 PLATE
"Cycles crossing 50 yds"
46m WEST FROM CROSSING
POINT.

APPLY 10 OFF TRANSVERSE
LINE MARKINGS AT 10m CENTRES
FROM WEST EDGE OF CROSSING
POINT, MARKINGS 600mm IN
WIDTH, 500mm CLEARANCE AT
KERB EDGE, COMPOSED OF A
HIGH FRICTION RED COLOURED
SURFACING MATERIAL
ACCEPTABLE TO STIRLING
COUNCIL ROADS SERVICE.

SIGNS ON NORTH
SHARED-USE FOOTWAY
MOUNTED ON
CRANKED POLES WITH
MINIMUM AIR
CLEARANCE 2.4m TO
PROVIDE AN
UNOBSTRUCTED
PASSAGE.

PROPOSED NON-TSRGD
INFORMATION SIGN
ILLUSTRATING DESIRED
ROAD USE FOR CYCLE
PRIORITY LANES 50m
FROM CROSSING POINT.

WEST-BOUND CYCLISTS
CROSS CARRIAGEWAY OF
B837 TO ENTER ADVISORY
CYCLE PRIORITY LANE ON
THE SOUTH EDGE OF THE
CARRIAGEWAY.

AVAILABLE VISIBILITY
SPRAY FROM START
OF CYCLE PRIORITY
LANES IS 143m.

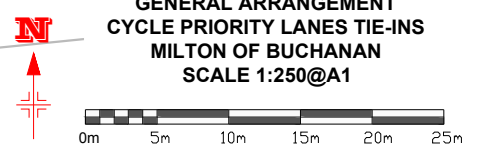
EAST- AND
WEST-BOUND
CYCLISTS TRAVEL
ON SHARED-USE
CORE PATH
FOOTWAY OF B837.

REQUIRED VISIBILITY
SPRAY OF 210m FOR FULL
STOPPING SIGHT DISTANCE
FOR 100kph (60mph) DESIGN
SPEED NOT ACHIEVABLE
WITHOUT REMOVAL OF
114m OF MATURE BEECH
HEDGE AND REPLACEMENT
WITH POST AND WIRE
STOCK FENCING.

REQUIRED VISIBILITY SPRAY OF
160m FOR 85 PERCENTILE
STOPPING SIGHT DISTANCE FOR
100kph (60mph) DESIGN SPEED NOT
ACHIEVABLE WITHOUT REMOVAL
OF 63m OF MATURE BEECH HEDGE
AND REPLACEMENT WITH POST
AND WIRE STOCK FENCING.

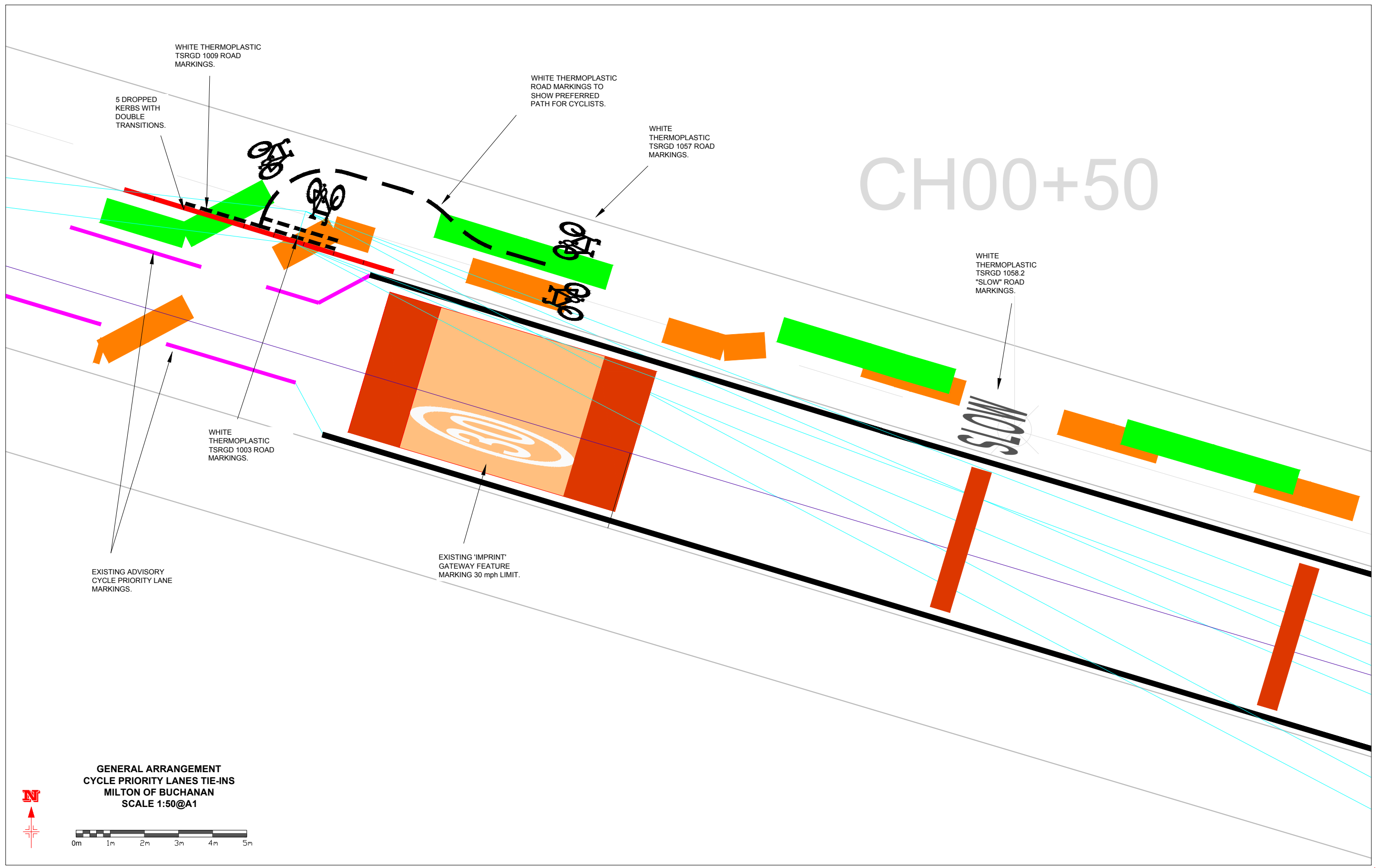
TSRGD 950 WITH
950.1 PLATE "Cycles
crossing 150 yds"
138m EAST FROM
CROSSING POINT.

**GENERAL ARRANGEMENT
CYCLE PRIORITY LANES TIE-INS
MILTON OF BUCHANAN
SCALE 1:250@A1**

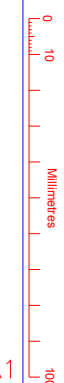
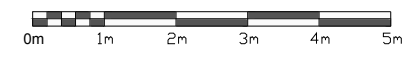
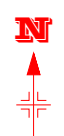


0
10
20
30
40
50
60
70
80
90
100
Millimetres

Notes:	Rev	Description	By	Date	Chk'd	Approved	Purpose of Issue	Client DRYMEN COMMUNITY DEVELOPMENT TRUST Transport Planning & Engineering TP&E	Project DRYMEN_COMMUNITY_DEVELOPMENT_TRUST DRYMEN-CROFTAMIE-BALAMAHA_ROUTES
	A	ORIGINAL ISSUE							Title MOB_PRIORITY_CYCLE_LANES_TIE-INS_EAST_1:250 SHEET_3_OF_5
Reproduced by permission of Ordnance Survey® on behalf of HMSO. © Crown Copyright and database right 2014. All rights reserved. Ordnance Survey® Licence number 100031883. Unauthorised reproduction infringes Crown copyright and may lead to prosecution or civil proceedings.	Scale 1:250@A1	Drawn CKM	Checked ST	Approved KD	Date 25/03/18	Date 25/03/18	Date 25/03/18	Drawing No. 698/10/99/403	Rev A



**GENERAL ARRANGEMENT
CYCLE PRIORITY LANES TIE-INS
MILTON OF BUCHANAN
SCALE 1:50@A1**



Notes:

Rev	Description	By	Date	Chk'd	Approved	Purpose of Issue
A	ORIGINAL ISSUE					

**DRYMEN
COMMUNITY
DEVELOPMENT
TRUST**

Transport Planning & Engineering

TP&E

Project	DRYMEN_COMMUNITY_DEVELOPMENT_TRUST DRYMEN-CROFTAMIE-BALAMAHA_ROUTES		
Title	MOB_PRIORITY_CYCLE_LANES_TIE-INS_EAST_1:50 SHEET_5_OF_5		
Scale	1:50@A1	Drawing No.	698/10/99/404
Drawn	CKM	Checked	ST
Date	25/03/18	Approved	KD
		Date	25/03/18
		Date	25/03/18
Rev	A		

Reproduced by permission of Ordnance Survey® on behalf of HMSO. © Crown Copyright and database right 2014. All rights reserved. Ordnance Survey® Licence number 100031883. Unauthorised reproduction infringes Crown copyright and may lead to prosecution or civil proceedings.